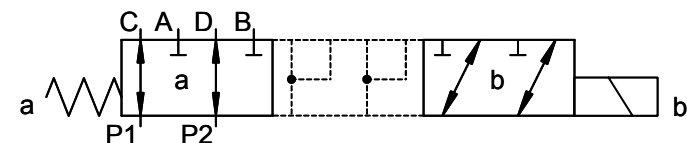


HIDRAVLIČNI SIMBOL
HYDRAULIC SYMBOL



TEHNIČNI PODATKI / TECHNICAL DATA

HIDRAVLIČNI / HYDRAULIC

| | |
|--|---|
| nazivna velikost / size | NG 6 |
| delovni tlak / operating pressure | do / up to 250 bar |
| tok / flow rate | do / up to 50 l/min |
| temperatura olja / oil temperature range | od / from -20°C do / up to +70°C |
| viskoznost olja / oil viscosity range | od / from 15 mm ² /s do / up to 380 mm ² /s |
| čistoča olja / filtration | 19/17/14 ISO 4406:1999 |
| velikost priključkov / port size | G3/8 ISO 1179-1 |

ELEKTRIČNI / ELECTRICAL

| | |
|---|---------------------|
| priključni konektor / connector type | EN 175301-803 |
| napajalna napetost / supply voltage | 12 V DC |
| moč / power | 36 W |
| temperatura okolice / ambient temperature | do / up to +50°C |
| temperatura navitja / coil temperature | do / up to +180°C |
| trajanje vklopa / duty cycle | stalno / continuous |

| | | | | | | | | | | | |
|---|----------|---|-------------|---|----------------|---|----------|---|----------|-----------------------------|--|
| Kakovost površine / Surface finish | ISO 1302 | Splošne tolerance / General tolerances | ISO 2768-mK | Splošne tolerance - ulitek / General tolerances - casting | ISO 8062 - CT8 | Tolerance geometrije / Shape and position tolerance | ISO 1101 | Temeljni principi toleriranja / Fundamental tolerancing principle | ISO 8015 | | |
| | | Kladivar, tovarna elementov za fluidno tehniko Žiri, d.o.o. All rights reserved. Refer to the protection notice ISO 16016. | | Format / Format: A3 Merilo / Scale: 1:2 | | Velikost / Size (mm): 181*91*64 | | Material / Material: / Teža / Weight (kg): 2.70 | | | |
| Konstruktor / Created by: P. Mravlje, Datum / Date: 16.03.2012 | | | | Sifra proizvoda / Product number: 4015794 | | | | Verzija / Version: 2 | | Projekt / Project: - | |
| Risalnik / Drawn by: P. Mravlje, Datum / Date: 16.03.2012 | | | | Površinska zaščita / Surface protection: / | | | | Toplotna obdelava / Thermal treatment: / | | | |
| Sprostil / Approved by: A. Burjek, Datum / Date: 16.03.2012 | | | | ISO 2768-m: > 6, 30, 120, 400, 1000 mm; ± 0,1, 0,2, 0,3, 0,5, 0,8 mm; < 10, 50, 120, 400 mm | | | | Status dokumenta / Document status: Sproščeno | | | |
| Naziv dokumenta / Document description: INT-KV-6/2-6-12DC3/8-S40 | | | | Sifra dokumenta / Document number: 4015794 | | | | Stran / Sheet: 1 | | Verzija / Version: A | |
| SPREMEMBE / REVISIONS | | | | ISO 13715: +0,2, +0,05, -0,2, -0,05 | | | | | | | |